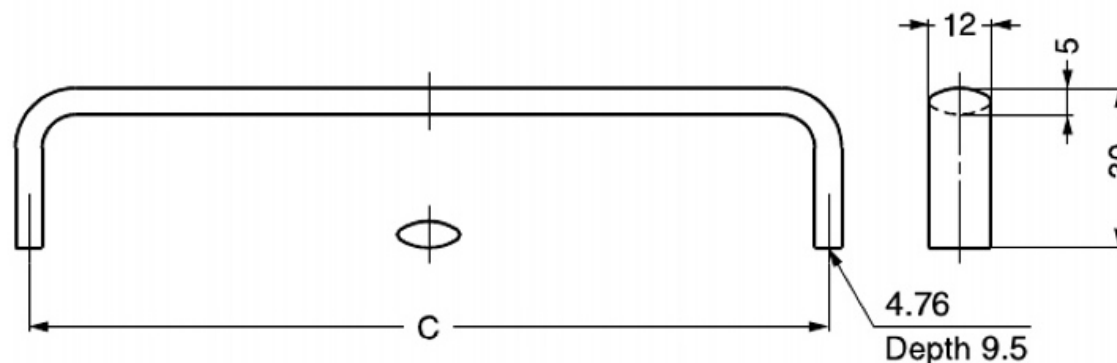


# STAINLESS STEEL HANDLE KC-S



● Ideal for harsh and high corrosion environments.



RoHS	CAD	Item Code	Item Name	Material	Finish	C	Weight (g)	Box (pcs)	Carton (pcs)
-	-	100-023-410	KC-S635/M	Stainless Steel (SUS316)	Mirror	88.9	67	20	200
-	-	100-023-414	KC-S635/S		Satin			20	200
-	-	100-023-411	KC-S640/M		Mirror	101.6	71	20	200
-	-	100-023-415	KC-S640/S		Satin			20	200
-	-	100-023-412	KC-S650/M		Mirror	127	85	20	200
-	-	100-023-416	KC-S650/S		Satin			20	200
-	-	100-023-413	KC-S660/M		Mirror	152.4	95	20	200
-	-	100-023-417	KC-S660/S		Satin			20	200