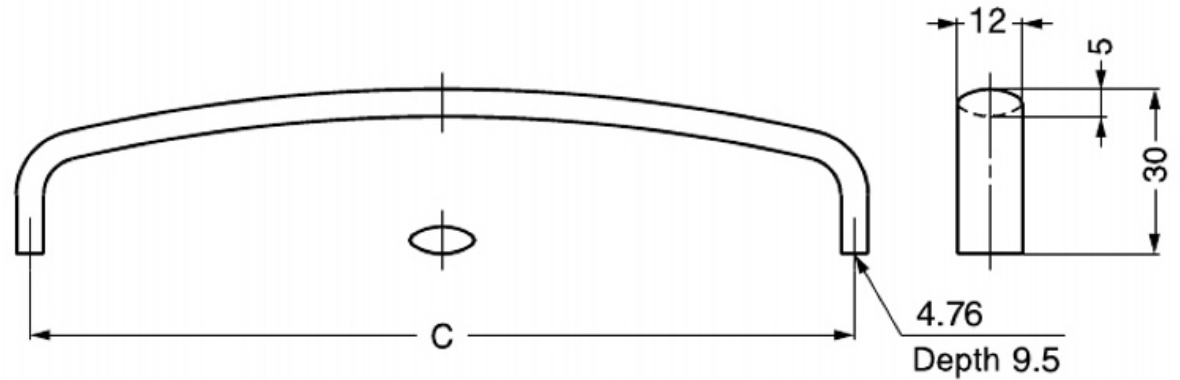


STAINLESS STEEL HANDLE KC-R



● Ideal for harsh and high corrosion environments.



RoHS	CAD	Item Code	Item Name	Material	Finish	C	Weight (g)	Box (pcs)	Carton (pcs)
-	-	100-023-418	KC-R635/M	Stainless Steel (SUS316)	Mirror	88.9	60	20	200
-	-	100-023-422	KC-R635/S		Satin			20	200
-	-	100-023-419	KC-R640/M		Mirror	101.6	67	20	200
-	-	100-023-423	KC-R640/S		Satin			20	200
-	-	100-023-420	KC-R650/M		Mirror	127	78	20	200
-	-	100-023-424	KC-R650/S		Satin			20	200
-	-	100-023-421	KC-R660/M		Mirror	152.4	88	20	200
-	-	100-023-425	KC-R660/S		Satin			20	200